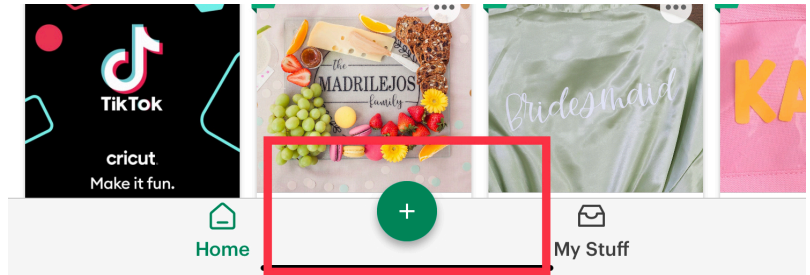


Etched Glass - Cricut Instructions

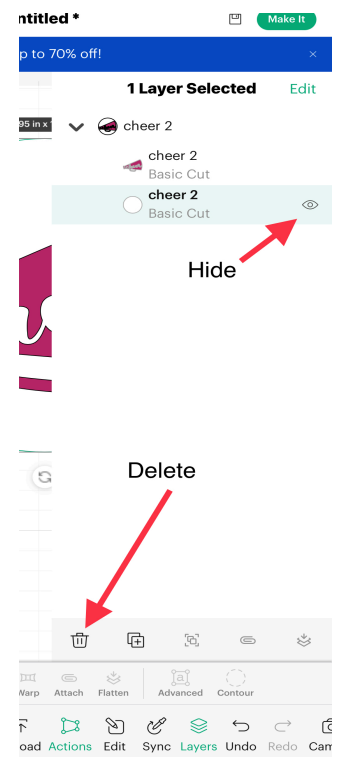
Setup

- Go to **Settings** on the iPad and confirm **Bluetooth** is turned **OFF** until it's your turn to cut.
 - **Only one iPad can have a Bluetooth connection to a Cricut machine at a time.**
- Open the Cricut Design Space app on your iPad
- Click on the green **+** circle to begin a new project
- Click **Upload** then **Open Uploaded Images**
- Choose your design, click **Add**



Customize

- Once DS and the selected image have loaded, click **Layers** to customize the design. Select the layer you want to change. If the layers are grouped, click the **Ungroup** icon at the bottom of that panel.
- Designs can be left as they are or add your own personalization.
- For personalization, click on **Text** icon, then click on the **font name** at the bottom. You may use any font you would like, but note that many fonts require a DS Access account. If you are using the free version of DS (w/o a paid subscription to Access), make sure and search for Free fonts.
- Once you have clicked on the font, type in the Name or Initial you would like to use for personalization.
- Click and drag the name over the design, the text will be large so use the resize handle to adjust the name to fit your space
- To align the design and text, on the layers panel highlight both by clicking on them and click **Align** and **Center** from the popup menu
- Once completed with the design, hide or delete anything you don't want to cut



Cutting

- Go to Settings on the iPad and turn on Bluetooth once it's your turn to cut
- Go to menu bar and determine from the class which machine is available to use, the choices will be Maker, Explorer or Joy
- Click Canvas at the upper right corner to return to your project
- Click on Make it in the upper right corner
- The top should show the following options:
 - On Mat
 - Mirror Off (for this project we will leave Mirror off)
- Click Next
- Set Base Material: Select Premium Vinyl
- Place vinyl on machine mat with the pretty vinyl side facing up
- Push the arrows to load the mat slightly holding the mat guiding into the Cricut
- Click the flashing button to cut

Weed and Apply Design

- Clean the glass thoroughly with alcohol to remove all grease, dust and fingerprints and allow it to dry completely before applying the stencil and etching cream.
- With the weeding tool, gently remove all the excess vinyl from your design. Anything you want to be etched needs to be removed. Open spaces will be filled with etching cream. Be patient with this process.
- Use a piece of transfer tape a little larger than the size of your design to protect the edges from any overflow of etching cream.
- Peel of the backing off the transfer tape and place it on the vinyl.
- Press the transfer tape to the vinyl and peel away the paper backing from the vinyl.
- Slowly, carefully, patiently, place your design on the glass, ensuring no gaps or bubbles develop. This step is important as the etching cream will seep into any wrinkles or bubbles that are not removed in this step. Use a scraper or your fingernail to work over every edge of the vinyl to make sure it's making contact with the glass.
- Peel away the transfer tape.
- Apply painter's tape to the outside edges of the stencil to ensure the areas you do not want etched are protected.

Etching

Important Notes

We'll be using Armour Etch to etch the glass. See detailed usage instructions on [their site](#).

Work in a well-ventilated area near a water source.

Wear protective gloves and eyewear.

Shake or stir the Armour Etch cream thoroughly before use.

- Apply a thick layer of etching cream for the chemical to react properly on the glass (thick enough so that you cannot see the design of the stencil through the cream). Be careful not to apply or let the cream run into untaped areas.
- Allow the cream to remain on the glass for 3 minutes (time varies depending on the glass being etched).
- Wash off all of the etching cream under lukewarm water.
 - Some of the stencil will be removed during this rinse and that's fine.
- After all traces of the etching cream are washed away, remove all the remaining tape and stencil pieces.
- Clean the glass again with alcohol and dry completely.